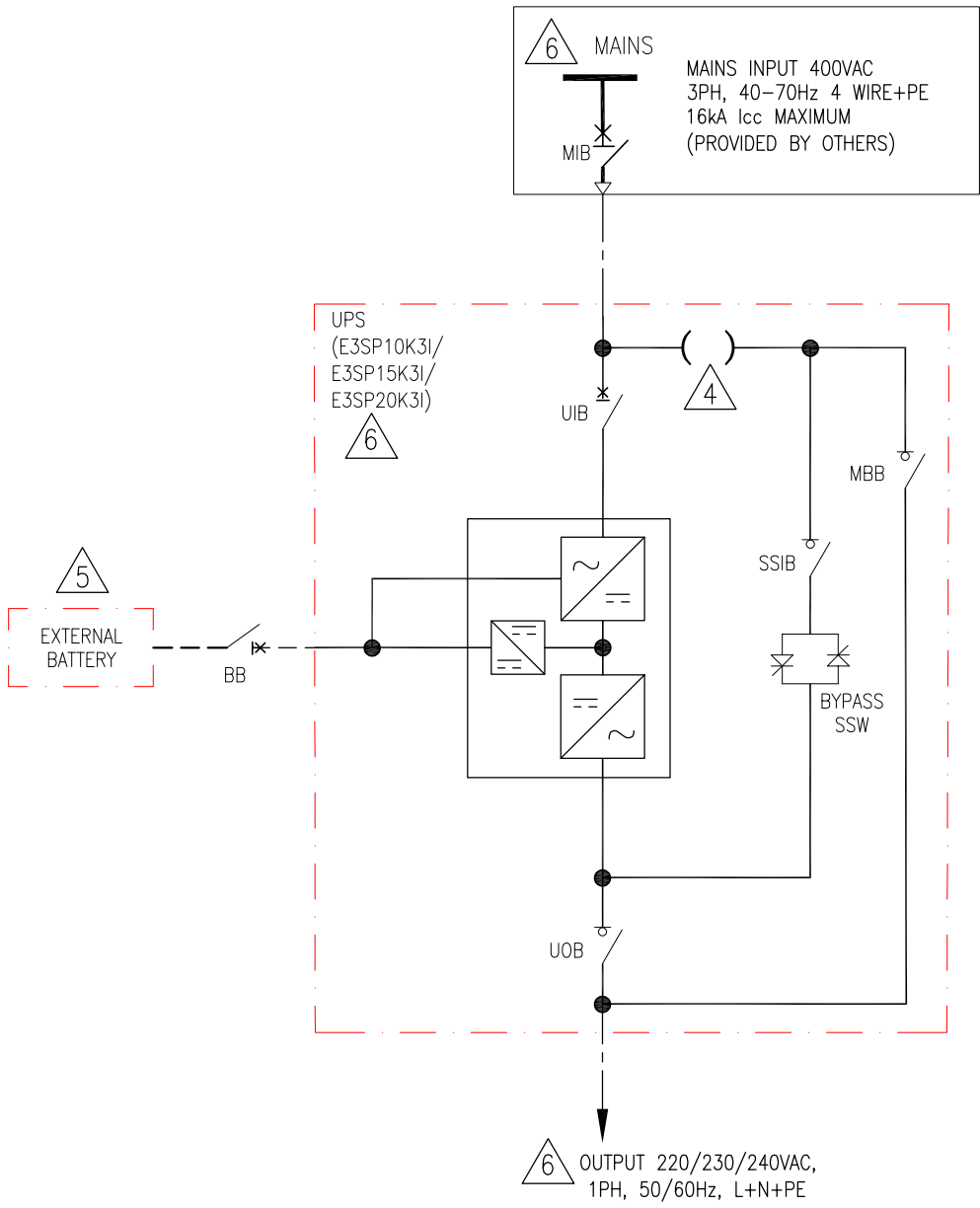
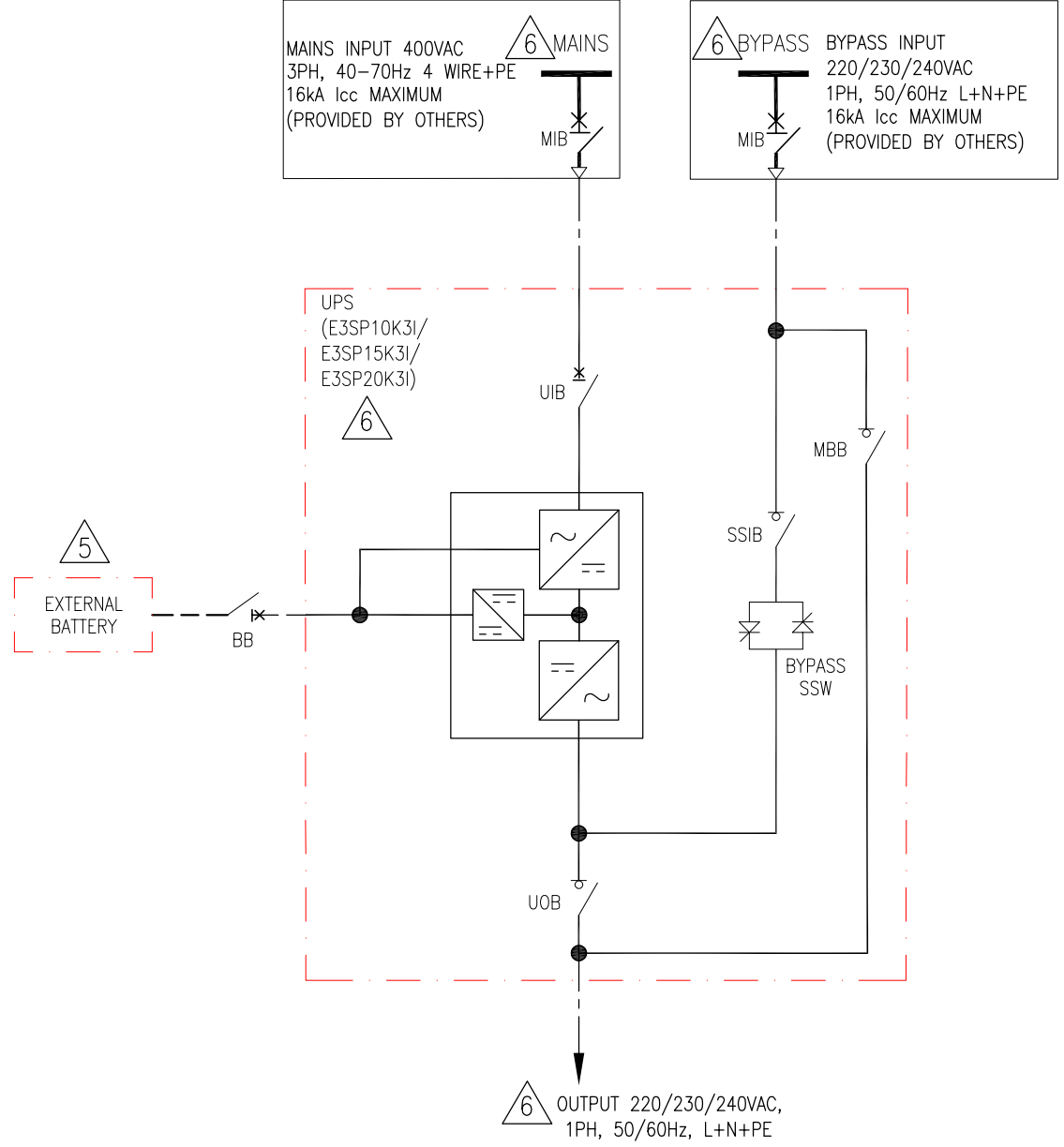


SINGLE MAINS CONFIGURATION



DUAL MAINS CONFIGURATION



- NOTES:**
1. INSTALLATION SHALL COMPLY WITH ALL APPLICABLE NATIONAL AND LOCAL ELECTRICAL REGULATIONS.
 2. REFER TO PRODUCT DOCUMENTATION FOR ADDITIONAL DETAILS PRIOR TO INSTALLATION AND SITE PREPARATION WORK.
 3. DRAWING DEPICTS POWER SYSTEM CONNECTIONS AND IS NOT REPRESENTATIVE OF PHYSICAL LAYOUT.
 4. SINGLE MAINS CONFIGURATION IS DEFAULT.
FOR DUAL MAINS CONFIGURATION REMOVE 1 SHORTING JUMPER.
 5. BATTERIES CAN BE CONNECTED IN SERIES DEPENDING UPON THE RUNTIME REQUIREMENTS.
 6. REFER TO SHEET-4 FOR ELECTRICAL DATA.
 7. UP TO 4 UPS CAN BE CONNECTED IN PARALLEL.
 8. CABLE LUGS ARE PROVIDED BY OTHERS.

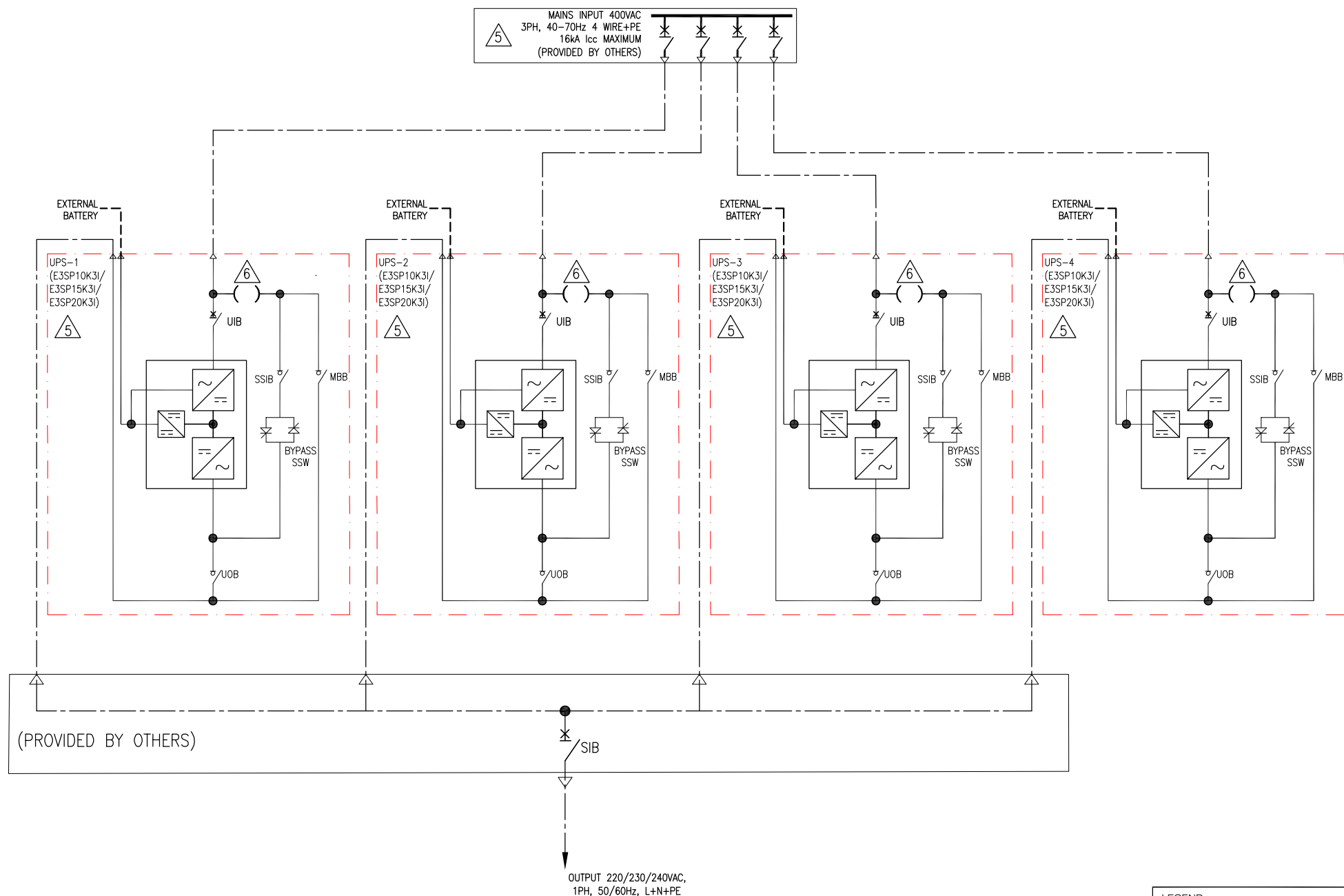
NOTE: BOTH MAINS SOURCE AND BYPASS SOURCE SHOULD SHARE THE SAME NEUTRAL AND PE.

LEGEND:

---	AC CABLE PROVIDED BY OTHERS
---	DC CABLE PROVIDED BY OTHERS

	THIS DRAWING AND SPECIFICATIONS HEREIN ARE THE PROPERTY OF SCHNEIDER ELECTRIC AND SHALL NOT BE COPIED, REPRODUCED OR USED IN WHOLE OR IN PART, AS THE BASIS FOR THE MANUFACTURE OR SALE OF ITEMS WITHOUT WRITTEN PERMISSION FROM SCHNEIDER ELECTRIC. THIS DRAWING IS BASED UPON LATEST AVAILABLE INFORMATION AND IS SUBJECT TO CHANGE WITHOUT NOTICE.	TITLE: EASY UPS 3S PRO 10 - 20kVA, 400V, 3PH IN 1PH OUT WITHOUT BATTERY MODULES SYSTEM ONLINE DIAGRAM-1 UPS		DWG NO: E3SP10K203I-SD	REV. 0	
		PROJECT: SUBMITTAL DRAWINGS SHEET 1 OF 5		DRAWN: TRASSIA	30-APR-26	FIRST ANGLE
				ENGINEER: YAPING YANG	30-APR-26	
				APPROVED: DAVE DONG	30-APR-26	PROJECTION

4 UPS IN PARALLEL – SINGLE MAINS



NOTES:

1. INSTALLATION SHALL COMPLY WITH ALL APPLICABLE NATIONAL AND LOCAL ELECTRICAL REGULATIONS.
2. REFER TO PRODUCT DOCUMENTATION FOR ADDITIONAL DETAILS PRIOR TO INSTALLATION AND SITE PREPARATION WORK
3. DRAWING DEPICTS POWER SYSTEM CONNECTIONS AND IS NOT REPRESENTATIVE OF PHYSICAL LAYOUT.
4. UP TO 4 UPS CAN BE CONNECTED IN PARALLEL.
5. REFER TO SHEET-4 FOR ELECTRICAL DATA.
6. SINGLE MAINS CONFIGURATION IS DEFAULT. FOR DUAL MAINS CONFIGURATION REMOVE 1 SHORTING JUMPER.
7. CABLE LUGS ARE PROVIDED BY OTHERS.

THIS DRAWING AND SPECIFICATIONS HEREIN ARE THE PROPERTY OF SCHNEIDER ELECTRIC AND SHALL NOT BE COPIED, REPRODUCED OR USED IN WHOLE OR IN PART, AS THE BASIS FOR THE MANUFACTURE OR SALE OF ITEMS WITHOUT WRITTEN PERMISSION FROM SCHNEIDER ELECTRIC. THIS DRAWING IS BASED UPON LATEST AVAILABLE INFORMATION AND IS SUBJECT TO CHANGE WITHOUT NOTICE.

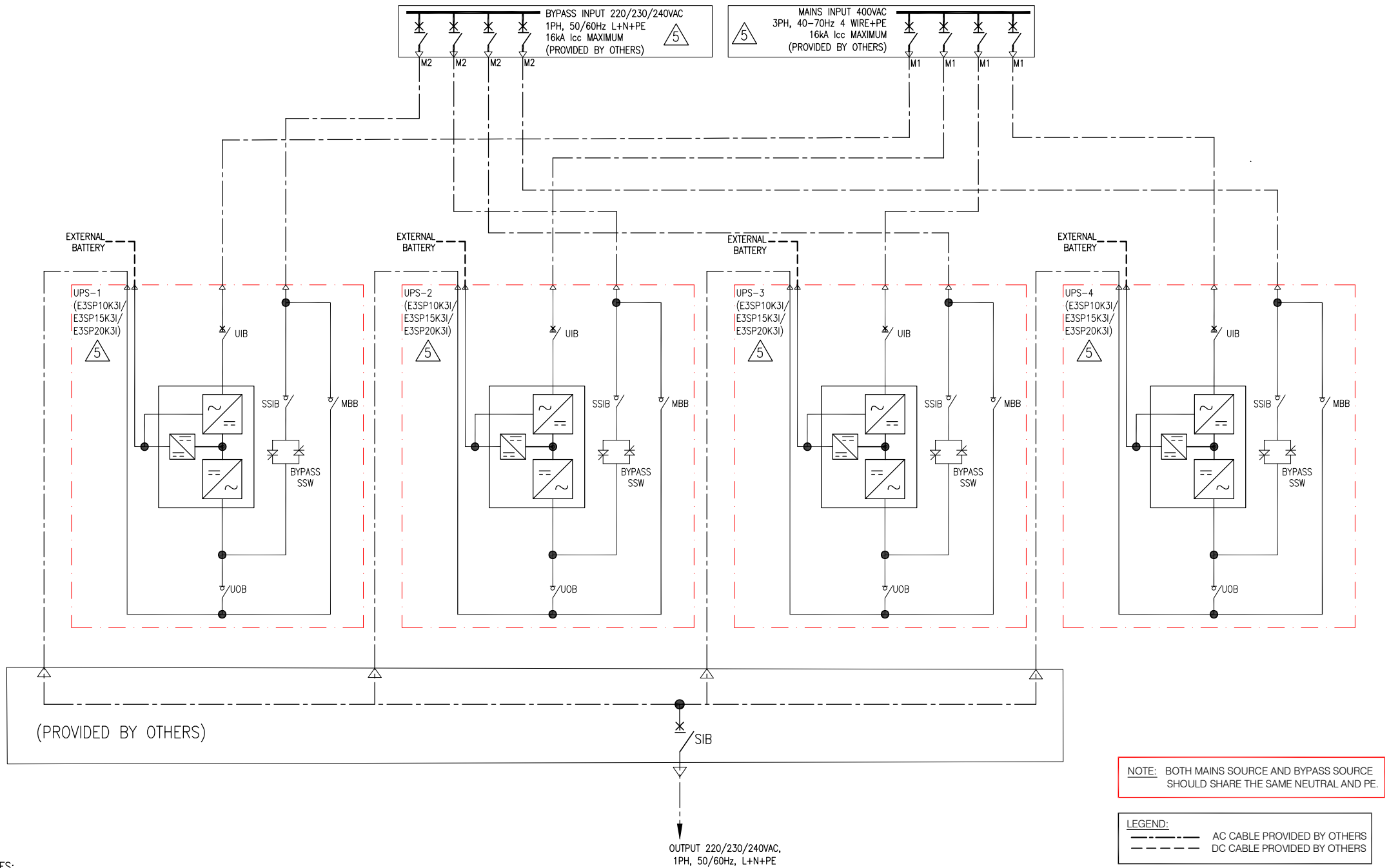
Schneider Electric

TITLE:
EASY UPS 3S PRO
10 - 20kVA, 400V, 3PH IN 1PH OUT
WITHOUT BATTERY MODULES
SYSTEM ONELINE DIAGRAM-4 UPS SINGLE MAINS
PROJECT: SUBMITTAL DRAWINGS SHEET 2 OF 5

LEGEND:	
---	AC CABLE PROVIDED BY OTHERS
---	DC CABLE PROVIDED BY OTHERS

DWG NO:	E3SP10K203I-SD	REV:	0
DRAWN:	TRASSIA	30-APR-26	FIRST ANGLE
ENGINEER:	YAPING YANG	30-APR-26	
APPROVED:	DAVE DONG	30-APR-26	

4 UPS IN PARALLEL – DUAL MAINS



NOTES:

1. INSTALLATION SHALL COMPLY WITH ALL APPLICABLE NATIONAL AND LOCAL ELECTRICAL REGULATIONS.
2. REFER TO PRODUCT DOCUMENTATION FOR ADDITIONAL DETAILS PRIOR TO INSTALLATION AND SITE PREPARATION WORK
3. DRAWING DEPICTS POWER SYSTEM CONNECTIONS AND IS NOT REPRESENTATIVE OF PHYSICAL LAYOUT.
4. UP TO 4 UPS CAN BE CONNECTED IN PARALLEL.
5. REFER TO SHEET-4 FOR ELECTRICAL DATA.
6. CABLE LUGS ARE PROVIDED BY OTHERS.

THIS DRAWING AND SPECIFICATIONS HEREIN ARE THE PROPERTY OF SCHNEIDER ELECTRIC AND SHALL NOT BE COPIED, REPRODUCED OR USED IN WHOLE OR IN PART, AS THE BASIS FOR THE MANUFACTURE OR SALE OF ITEMS WITHOUT WRITTEN PERMISSION FROM SCHNEIDER ELECTRIC. THIS DRAWING IS BASED UPON LATEST AVAILABLE INFORMATION AND IS SUBJECT TO CHANGE WITHOUT NOTICE.



TITLE: EASY UPS 3S PRO 10 - 20KVA, 400V, 3PH IN 1PH OUT WITHOUT BATTERY MODULES SYSTEM ONELINE DIAGRAM-4 UPS DUAL MAINS	
PROJECT: SUBMITTAL DRAWINGS	SHEET 3 OF 5

DWG NO:	E3SP10K203I-SD		REV.	0
DRAWN:	TRASSIA	30-APR-26	FIRST	ANGLE PROJECTION
ENGINEER:	YAPING YANG	30-APR-26	ANGLE	
APPROVED:	DAVE DONG	30-APR-26	PROJECTION	

FIRST

ANGLE PROJECTION

ELECTRICAL DATA SHEET				
UPS RATING	10kVA	15kVA	20kVA	
INPUT SPECIFICATIONS				
INPUT VOLTAGE	400V	400V	400V	
NOMINAL INPUT CURRENT (A)	16/16/15	24/23/22	32/31/29	
MAXIMUM INPUT CURRENT (A)	21/20/19	31/29/28	41/39/38	
INPUT CURRENT LIMITATION (A)	21/20/19	31/29/28	41/39/38	
INPUT FREQUENCY	40-70Hz			
INPUT WIRING	4-wire (L1, L2, L3, N, PE)			
INPUT THDI	< 3%@ Full linear load, ≤ 4%@ Full non-linear load			
BYPASS SPECIFICATIONS				
BYPASS VOLTAGE	220V/230V/240V	220V/230V/240V	220V/230V/240V	
MINIMUM BYPASS VOLTAGE	198/207/216	198/207/216	198/207/216	
MAXMUM BYPASS VOLTAGE	242/253/264	242/253/264	242/253/264	
NOMINAL BYPASS CURRENT (A)	47/45/43	70/67/64	94/89/86	
BYPASS FREQUENCY	50/60Hz			
BYPASS WIRING	2-wire (L, N, PE)			
OUTPUT SPECIFICATIONS				
OUTPUT VOLTAGE	220V/230V/240V	220V/230V/240V	220V/230V/240V	
NOMINAL OUTPUT CURRENT (A)	46/44/42	69/65/63	92/87/84	
OUTPUT FREQUENCY	50/60Hz			
OUTPUT WIRING	2 Wire (L+N+PE)			
OUTPUT THDU	<1% for 100% balanced linear load, < 5% for non-linear load			
BATTERY SPECIFICATIONS				
CHARGING POWER	Programmable from 1% to 30% of UPS capacity. Default is 10%.	Programmable from 1% to 26% of UPS capacity. Default is 10%.	Programmable from 1% to 20% of UPS capacity. Default is 10%.	
MAXIMUM CHARGING POWER (W)	2000 @ 100% Load, 3000@85% Load	3000 @ 100% Load, 3900@85% Load	4000 @ 100% Load, 4000 @0% Load	
NOMINAL BATTERY VOLTAGE (VDC)	384 to 480			
NOMINAL FLOAT VOLTAGE (VDC)	436 to 545			
END OF DISCHARGE VOLTAGE (FULL LOAD) (VDC)	308 to 384			
END OF DISCHARGE VOLTAGE (NO LOAD) (VDC)	336 to 420			
BATTERY CURRENT AT FULL LOAD AND NOMINAL BATTERY VOLTAGE (A)	27-22	41-33	55-44	
BATTERY CURRENT AT FULL LOAD AND MINIMUM BATTERY VOLTAGE (A)	34-27	51-41	68-55	
RIPPLE CURRENT	<5% C10			
MAXIMUM SHORT CIRCUIT WITHSTAND	Icc=16kA			

NOTES:

- 1.INSTALLATION SHALL COMPLY WITH ALL APPLICABLE NATIONAL AND LOCAL ELECTRICAL REGULATIONS.
- 2.REFER TO PRODUCT DOCUMENTATION FOR ADDITIONAL DETAILS PRIOR TO INSTALLATION AND SITE PREPARATION WORK.

THIS DRAWING AND SPECIFICATIONS HEREIN ARE THE PROPERTY OF SCHNEIDER ELECTRIC AND SHALL NOT BE COPIED, REPRODUCED OR USED IN WHOLE OR IN PART, AS THE BASIS FOR THE MANUFACTURE OR SALE OF ITEMS WITHOUT WRITTEN PERMISSION FROM SCHNEIDER ELECTRIC. THIS DRAWING IS BASED UPON LATEST AVAILABLE INFORMATION AND IS SUBJECT TO CHANGE WITHOUT NOTICE.



TITLE:
EASY UPS 3S PRO
10 - 20KVA, 400V, 3PH IN 1PH OUT
WITHOUT BATTERY MODULES
ELECTRICAL DATA SHEET

PROJECT: SUBMITTAL DRAWINGS | SHEET 4 OF 5

DWG NO: E3SP10K203I-SD

DRAWN:	TRASSIA	30-APR-26
ENGINEER:	YAPING YANG	30-APR-26
APPROVED:	DAVE DONG	30-APR-26

REV. 0

FIRST ANGLE PROJECTION

Copper for 3:1 UPS – Single Mains									
UPS Rating	10kVA			15kVA			20kVA		
Volatge (V)	380	400	415	380	400	415	380	400	415
Input phases (mm²)	16	16	16	25	25	25	2 * 16	2 * 16	2 * 16
Input neutral (mm²)	16	16	16	25	25	25	2 * 16	2 * 16	2 * 16
Input PE(mm²)	16	16	16	16	16	16	16	16	16
Bypass/output phases (mm²)	16	16	16	25	25	25	35	35	35
Bypass/output neutral (mm²)	16	16	16	25	25	25	35	35	35
Bypass PE/output PE(mm²)	16	16	16	16	16	16	16	16	16
DC+/DC-/DC N (mm²)	6	6	6	6	6	6	16	16	16
DC PE (mm²)	6	6	6	6	6	6	16	16	16

Copper for 3:1 UPS – Dual Mains									
UPS Rating	10kVA			15kVA			20kVA		
Volatge (V)	380	400	415	380	400	415	380	400	415
Input phases (mm²)	6	6	6	6	6	6	10	10	10
Input neutral (mm²)	6	6	6	6	6	6	10	10	10
Input PE(mm²)	6	6	6	6	6	6	10	10	10
Bypass/output phases (mm²)	16	16	16	25	25	25	35	35	35
Bypass/output neutral (mm²)	16	16	16	25	25	25	35	35	35
Bypass PE/output PE(mm²)	16	16	16	16	16	16	16	16	16
DC+/DC-/DC N (mm²)	6	6	6	6	6	6	16	16	16
DC PE (mm²)	6	6	6	6	6	6	16	16	16

NOTES:

- 1.INSTALLATION SHALL COMPLY WITH ALL APPLICABLE NATIONAL AND LOCAL ELECTRICAL REGULATIONS.
- 2.REFER TO PRODUCT DOCUMENTATION FOR ADDITIONAL DETAILS PRIOR TO INSTALLATION AND SITE PREPARATION WORK.

THIS DRAWING AND SPECIFICATIONS HEREIN ARE THE PROPERTY OF SCHNEIDER ELECTRIC AND SHALL NOT BE COPIED, REPRODUCED OR USED IN WHOLE OR IN PART, AS THE BASIS FOR THE MANUFACTURE OR SALE OF ITEMS WITHOUT WRITTEN PERMISSION FROM SCHNEIDER ELECTRIC. THIS DRAWING IS BASED UPON LATEST AVAILABLE INFORMATION AND IS SUBJECT TO CHANGE WITHOUT NOTICE.



TITLE: EASY UPS 3S PRO
10 – 20KVA, 400V, 3PH IN, 1PH OUT
WITHOUT BATTERY MODULES
RECOMMENDED CABLE SIZES

PROJECT: SUBMITTAL DRAWINGS | SHEET 5 OF 5

DWG NO:	E3SP10K203I–SD		REV:	0
DRAWN:	TRASSIA	30–APR–26	FIRST ANGLE PROJECTION	
ENGINEER:	YAPING YANG	30–APR–26		
APPROVED:	DAVE DONG	30–APR–26		